

CERTIFICATE OF LOCATION OF GOVERNMENT CORNER

SW Corner of Section 33, Township 105, Range 43, P.M.

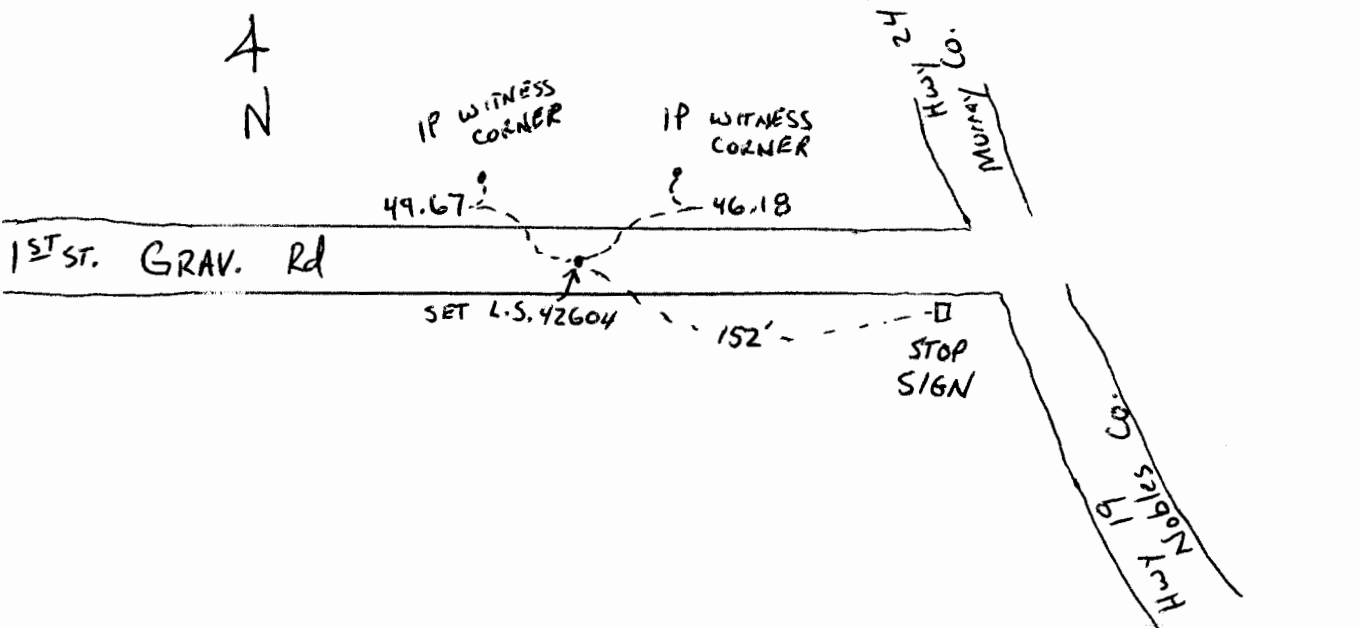
STATE OF MINNESOTA, County of Murray

At the corner location shown on the sketch:

On \_\_\_\_\_ found a \_\_\_\_\_  
Date

left monument as found,  lowered monument,  removed monument (explain)

On 8/9/2006 placed a 1/2" IRON L.S. 42604, which falls on the  
Date E of the Road



I hereby certify that this document and the data contained herein was prepared by me or under my direct supervision.

Paul H. J. Signature 1-18-07 Date

Registration No. 42604

Land Surveyor,  Professional Engineer

County Surveyor,  County Engineer

OFFICE OF THE REGISTER OF DEEDS

County of \_\_\_\_\_

I hereby certify that this document was filed in the Reg. of Deeds office at \_\_\_\_\_ M on the \_\_\_\_\_ day of \_\_\_\_\_ A.D., 20\_\_

Register of Deeds \_\_\_\_\_

By \_\_\_\_\_, Deputy

DOCUMENT NO. \_\_\_\_\_

FEB - 2 2007